

SWAN73



EMBRACE

IT

Peace or Adventure.

Cruising or Racing.

ALL

Silence or Thrill.

Comfort or Speed.

Why choose?

Introducing a new way to
master sailing.

for those who seek no
compromise.

New Swan 73.

Embrace it all.





SWAN 73



SWAN73

CONCEPT & DESIGN

The Swan 73 is a true performance cruiser and a modern expression of the Classic Swan heritage.

Designed by Germán Frers, she carries forward more than four decades of collaboration with Nautor Swan, refining a philosophy where timeless design meets advanced performance.

Her hull lines are slim and efficient, her proportions balanced and powerful, while her sailplan ensures both responsiveness and control in all conditions.

The result is a yacht that is fast, stable and instinctive at the helm, delivering confidence whether cruising offshore or pushing performance.

A seamless evolution of a Swan icon.
Clean, elegant, and purpose-driven.



SWAN73

EXTERIOR DESIGN

In line with New Product Development strategy, the design philosophy follows a path of evolution rather than disruption, remaining true to the brand's iconic identity.

Designed by Luca Ardizio Design, the exterior design establishes a clean, modern and highly functional language, where form and performance are conceived as a single coherent system. On deck, every element is carefully integrated to ensure clarity, efficiency and intuitive handling under sail. Distinctive features include an offset companionway, an asymmetrical cockpit, and seamlessly integrated running rigging, all contributing to a deck layout that ensures fluid, intuitive movement. The layout allows smooth operation even with a reduced crew, while twin helms provide full visibility and precise control in all conditions.

The cockpit is conceived as a versatile living space, naturally transitioning between performance sailing and relaxed cruising. Generous seating areas and protected zones ensure comfort both underway and at anchor.

Every detail reflects his approach to design: a precise balance between aesthetics, functionality and onboard experience. A pure expression of contemporary Swan design.



SWAN73

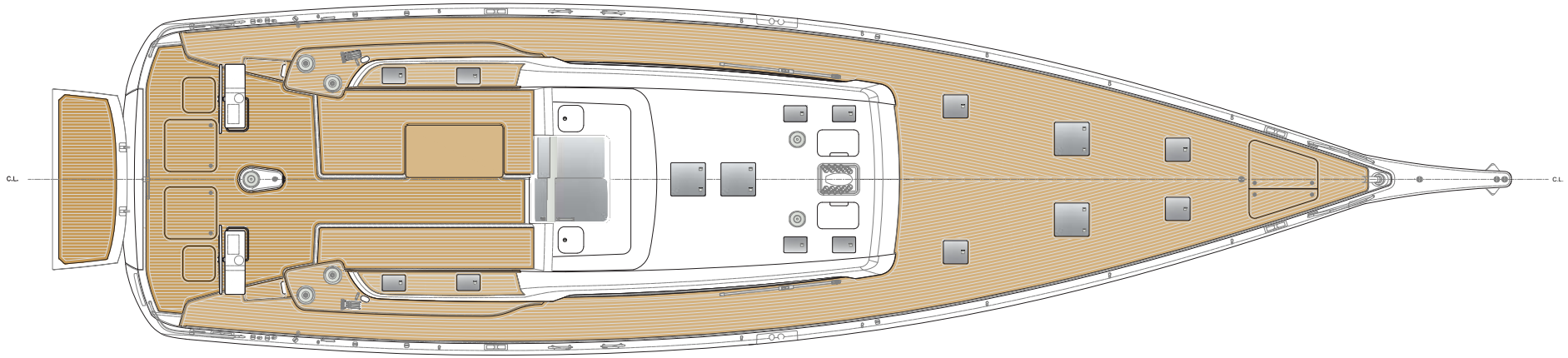


SWAN73

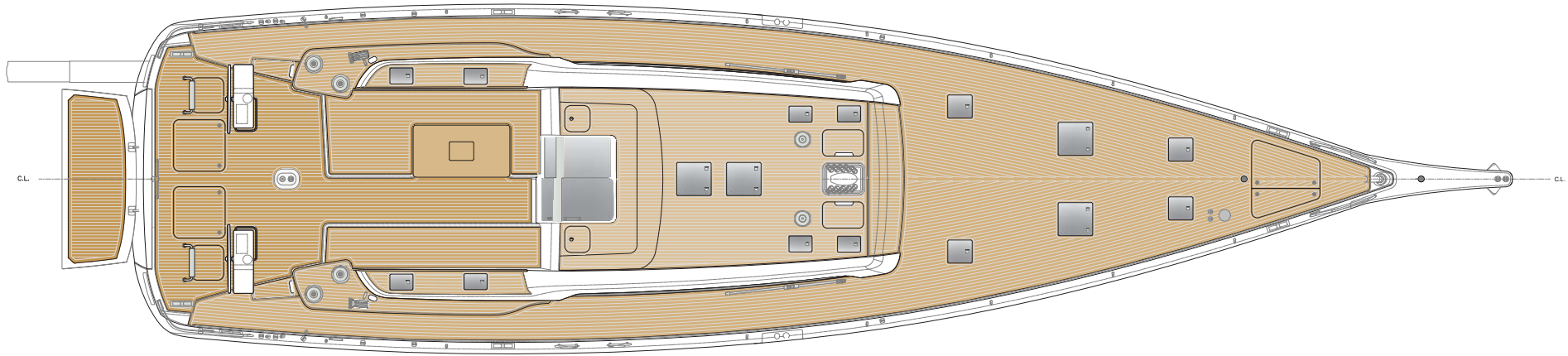


SWAN73

Standard



With options





SWAN73

INTERIORS

Below deck, the Swan 73 features a modern, bright and refined interior defined by comfort, functionality and timeless elegance. The layout, developed by Luca Ardizio Design, is complemented by Blend Studio in collaboration with the Nautor Swan interior team, which reinterprets the Swan heritage through a clean and contemporary language.

A bespoke décor concept introduces Canaletto walnut combined with light fabrics and finishes, creating a warm, balanced and welcoming atmosphere, while large windows enhance natural light and openness. The yacht offers a forward owner's suite, two guest cabins with en suite bathrooms, and a flexible aft crew area, ensuring privacy and long-range cruising capability.

At sea, the Swan 73 is precise, stable and responsive in all conditions, with twin rudders and two keel options ensuring optimal performance and control.

A synthesis of tradition and modern design, delivering pure, essential sailing.



SWAN73



SWAN73







SWAN73

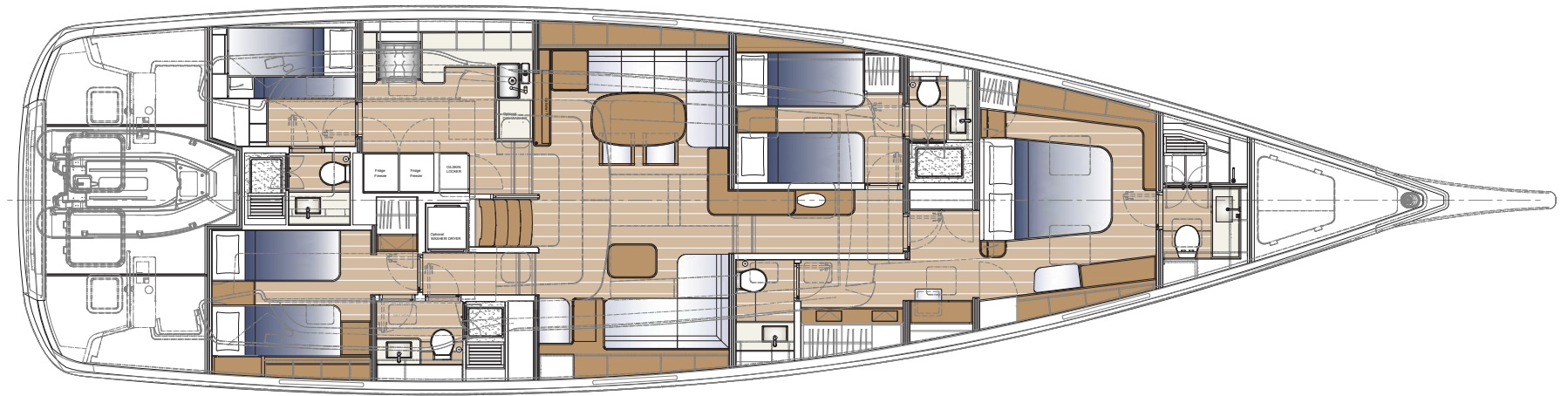




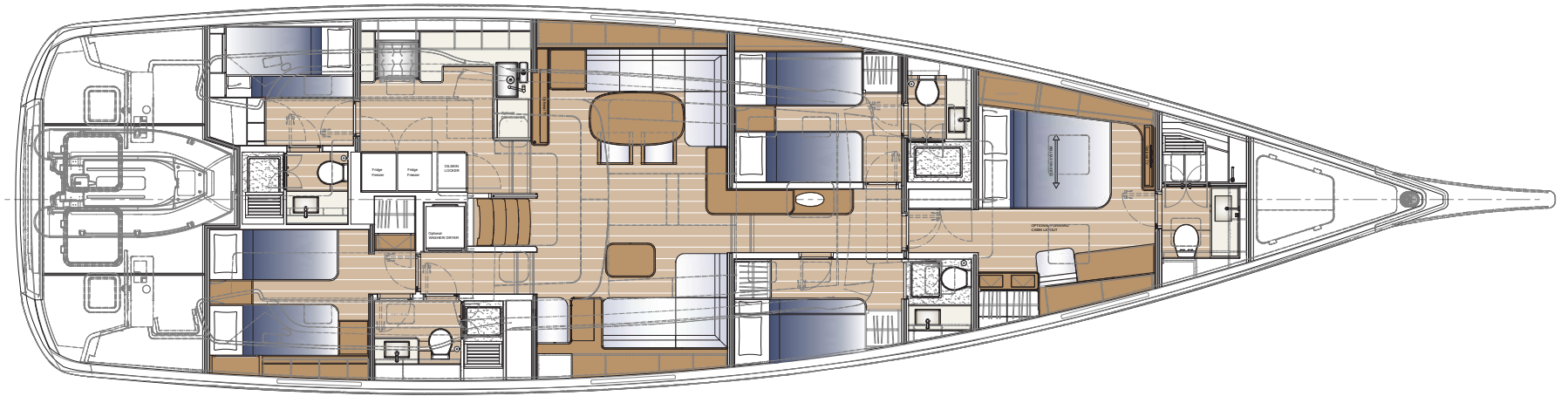
SWAN73



3 cabin version with optionals



4 cabin version





SWAN 73



SWAN73



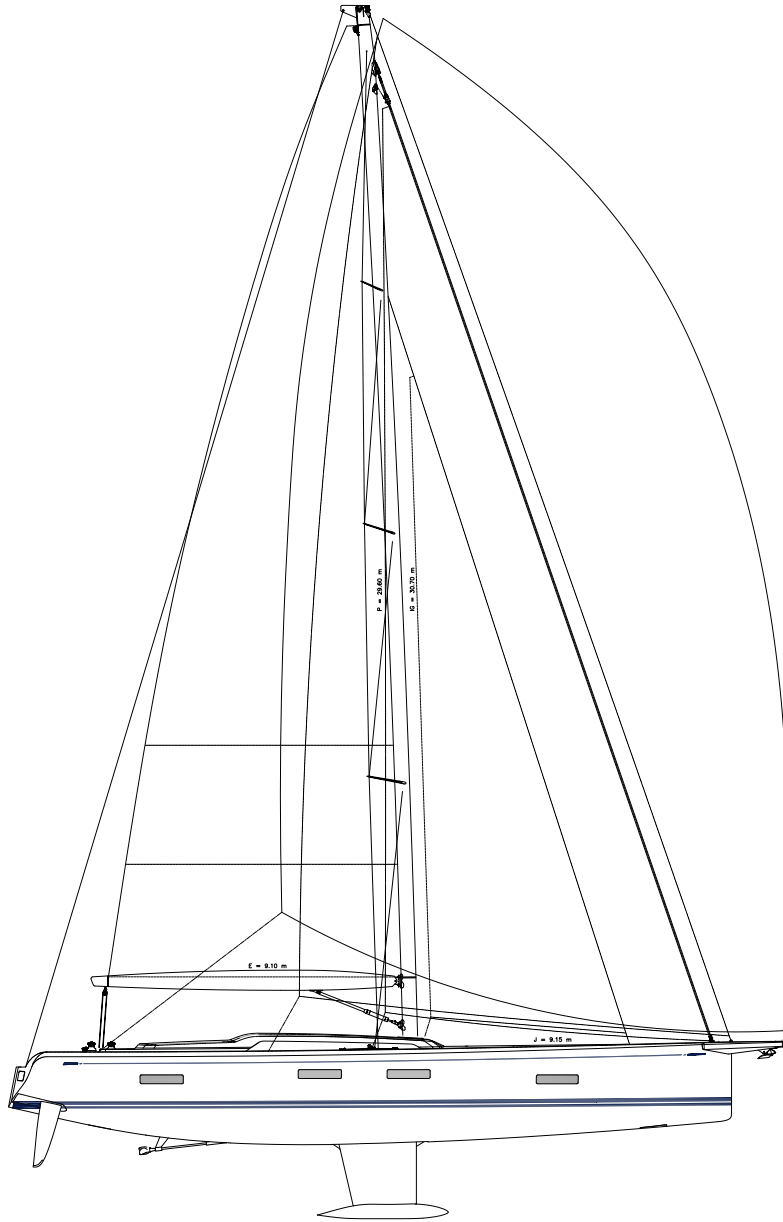
SWAN 73



SWAN73



SWAN73



Length of hull 22,47 m
LOA 23,67 m
LWL 21,23 m
Beam Max 6,12 m
Draft 3,20 m
Displacement light 38.800 kg
Ballast 8.500 kg
Fuel 1.500 l
Water 1.000 l
Sail area 3236.6 sqm
Engine Yanmar 4LV195 195Hp

**NAUTOR
SWAN**