

**SWAN51**









**NAUTOR  
SWAN**

## Heritage

The first Swan 51 represented a landmark in the inspirational evolution of the Nautor Swan brand. Launched in 1981 the model marked the first collaboration between Swan and the celebrated naval architect Germán Frers. Based on the successful 51-foot Admiral's Cup racer Blizzard, the Swan 51 was the start of one of the most successful partnerships in yachting history with over 700 yachts produced so far to his design.

It is a partnership that continues to this day with the unveiling of the New Swan 51, representing the ongoing and always evolving creative relationship with Frers Naval Architecture.

In another mark of the model's enduring heritage, the 1,000th yacht ever built by Nautor was named Formosa — a Swan 51.

The Swan 51 has a special place in the history of the company.



**SWAN51**









## Design Germán Frers



The new Swan 51 steps into the narrow space between the Swan 48 and Swan 55, and draws valuable design insights and experience from the great success of both those models, with more than 70 currently sailing all around the world.

Based on that impressive database, alongside the valued feedback from owners, the new Swan 51 offers design and practical solutions that make the yacht comfortable and easy to sail from coastal waters to long offshore passages. The Swan 51 also features a mast which has been moved more to the centre of the yacht, further enhancing balance.

Ultimately, like all Swans, the 51 is a no-compromise sailing yacht, a pure sailor, more a sportscar than a limousine. It is designed to be reactive to steer and responsive to sail adjustments, bringing the sensations of sailing alive.

**SWAN51**





**NAUTOR  
SWAN**

## Hull

The new Swan 51 is the result of extensive experience gained from building around 70 yachts between 48 and 55 feet in recent years. This wealth of knowledge, combined with invaluable feedback from Swan owners around the world, has informed every detail of the design—ensuring a yacht that is both comfortable and easy to sail, whether navigating coastal waters or embarking on long offshore passages.

One of the key refinements is the mast position, now set further aft towards the center of the yacht. This adjustment significantly enhances the yacht's balance and performance, contributing to a more refined and responsive sailing experience.

The twin-rudder configuration allows the yacht to remain balanced, preventing any tendency to broach even while steering at a 20-degree heeling angle, at which the hull is optimised to provide maximum performance. The rudder stocks are both mounted in sealed waterproof compartment to minimise any possible damage or flooding following a collision at sea.

At the same time the dual-rudder configuration also allows access to shallower anchorages when in cruising mode, as does the optional shallow draught keel (2.05m) compared to the standard keel (2.45m). An optional 3.2m performance keel is also available.

A bow thruster is fitted as standard to the Swan 51 to enable low-speed manoeuvring and docking, particularly when sailing short-handed. In addition the fixed bowsprit, common to all recent Swan models, also houses the anchor which is well forward of the bow to avoid damage on hoisting.

**SWAN51**









**NAUTOR  
SWAN**

## Deck

The deck is the most important area on any yacht, whether for high-performance racing or relaxed, comfortable cruising. Swan has always taken great pride in its meticulous attention to detail, creating decks optimized for efficient, safe, and enjoyable sailing. The new Swan 51 is a clear example of this. A long sail locker at the front provides generous volume for easy access and sufficient longitudinal space to store any type of sail, complete with anti-torsion cable.

The coachroof shape is the latest evolution of the new Frers design, combining the classic Swan wedge coachroof—first introduced in 1970—with all the modern features, including housing for a self-tacking track, seven opening hatches, and a garage for the sprayhood.

The cockpit size exceeds the average space of a 50-foot yacht, thanks to an innovative “wide-body” coaming design: the usable width is comparable to that of a 60-footer, without compromising the functionality of the side decks. This allows for the installation of two innovative tables, which can easily be converted into sunbathing areas or combined into a single “wedding-size” table seating up to 10 people.

Finally, meticulous work by Germán Frers has softened the hull-to-deck joint, adding an elegant touch while reducing the visual impact of the freeboard.

**SWAN51**

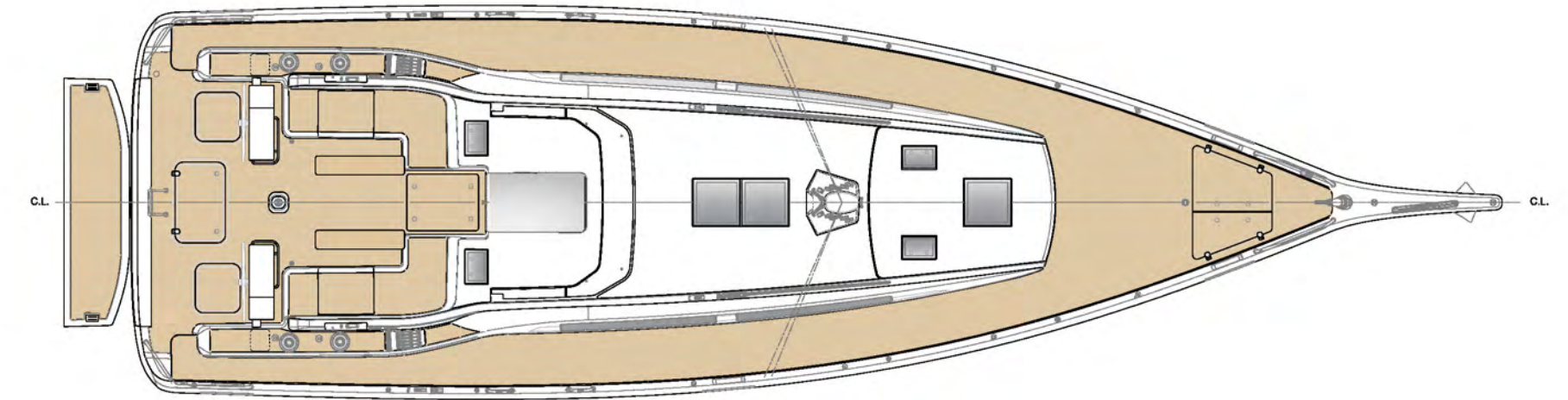




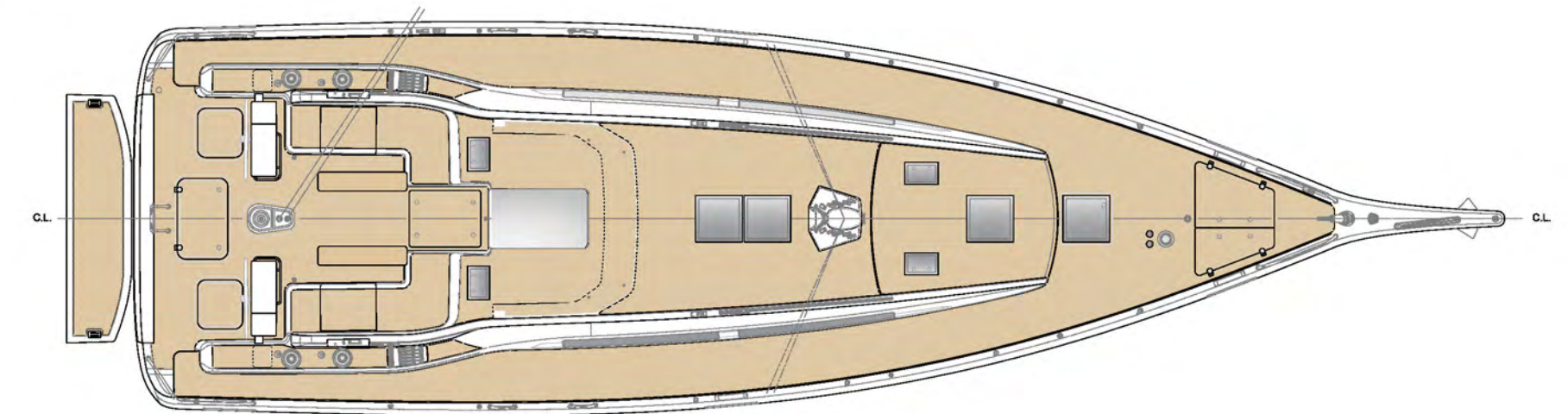




Standard



With options







## Interiors

**NAUTOR  
SWAN**

Refined luxury, maximum comfort, classic style and elegance — all that you expect from the Swan brand are present in the new Swan 51.

A spacious main saloon greets you descending the main companionway with its clear feeling of space and volume. With natural light from numerous apertures, the C-shaped sofa offers a welcoming space.

The chart table and main table locations, as well as seating and storage areas, can be configured around a range of options to suit owner's preferences.

The galley, following the successful layouts seen in the Swan 48 and 55, offer domestic-level amenities and appliances as required.

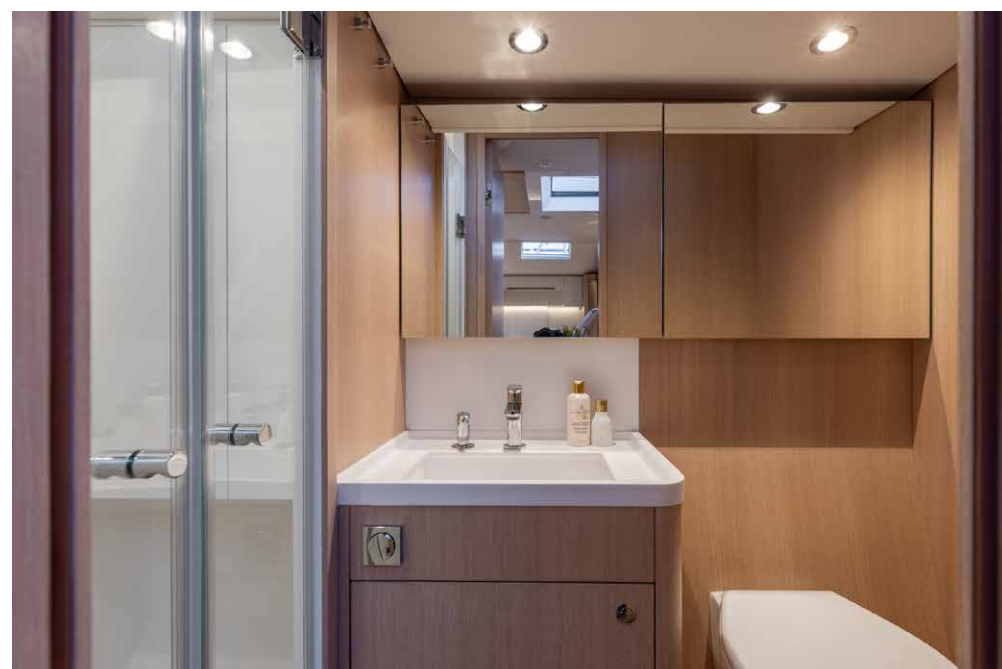
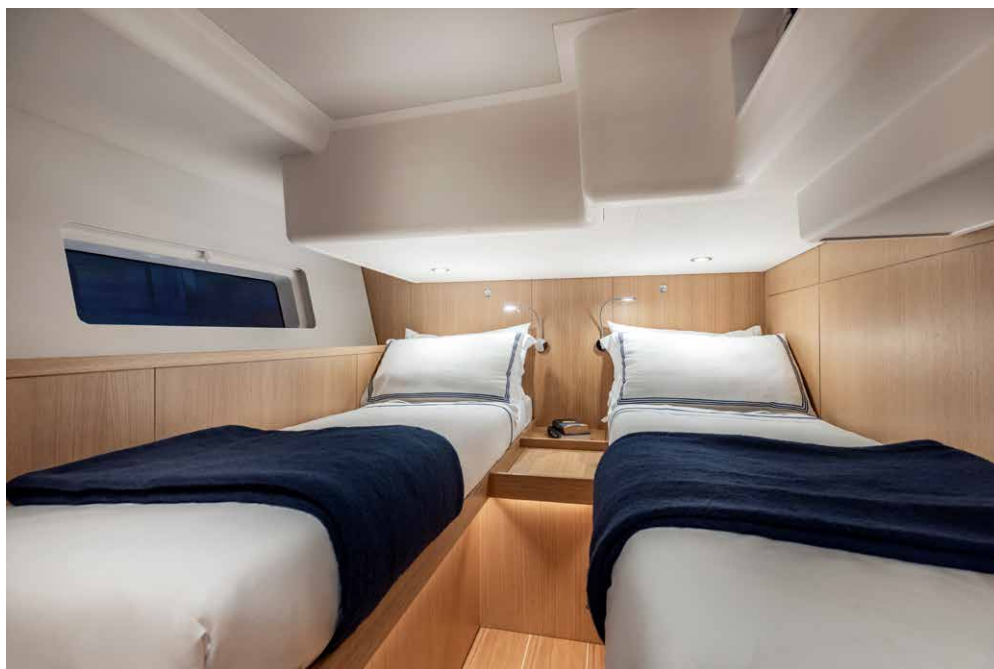
A three-cabin interior layout features a spacious owner's cabin forward with private head and shower space. VIP and guest cabins facilities, with a common head and shower, are located aft.

The sound-proofed engine room is readily accessible, with space allowed for an optional genset.

Styling and finishing, in wood, fabrics and leather, is offered in a variety of moods created by interior designer Misa Poggi: Swan Soul, Scandi Vision, Blue Genoa and Velvet Vibe.

**SWAN51**

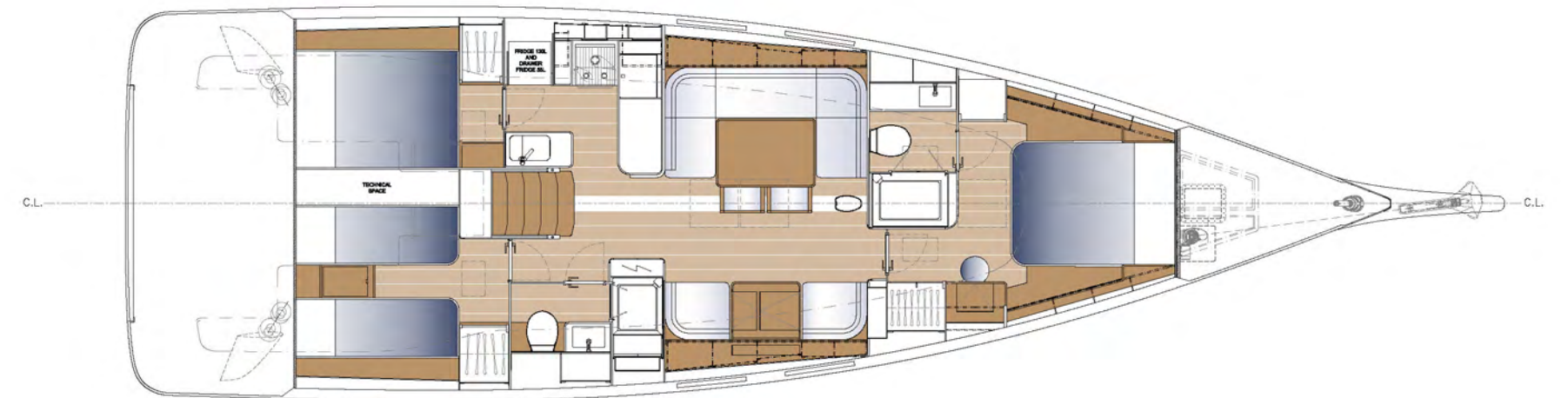




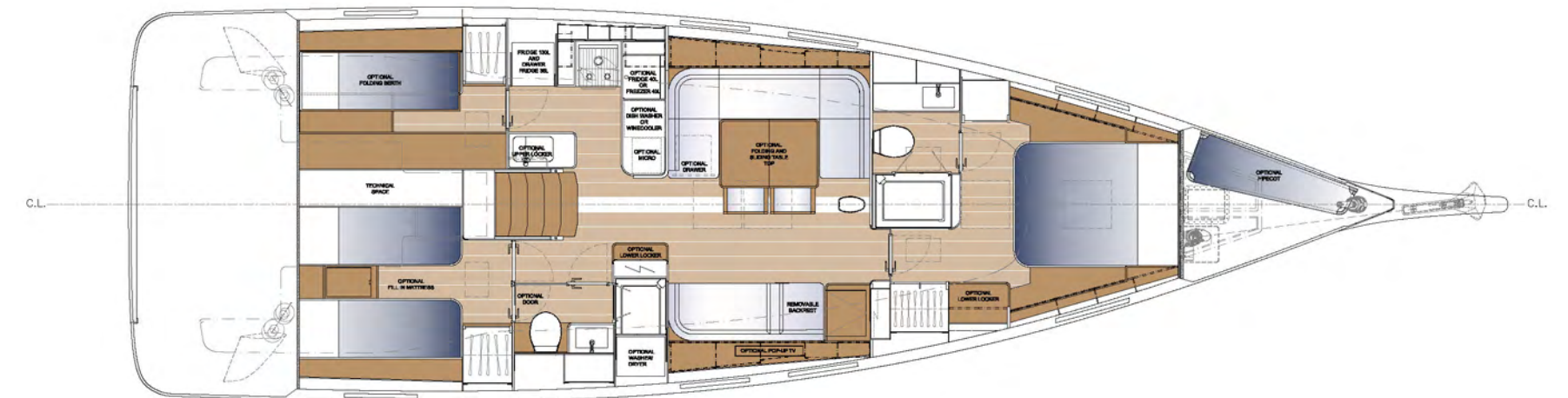




Standard



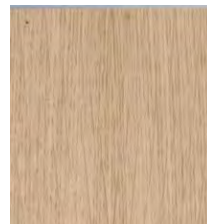
With options



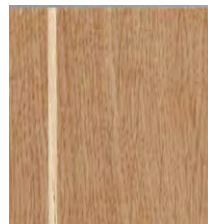


# Woods

Swan Soul

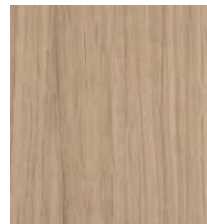


Natural European Oak varnished



Natural European Oak with light stripes varnished

Scandi Vision

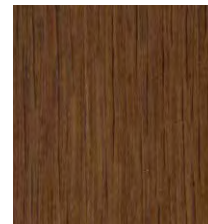


European Oak White treatment varnished



European Oak White treatment varnished with v-grooves

Blue Genoa

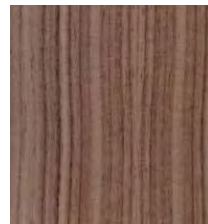


European Dark Oak varnished Satin



European Dark Oak varnished with v-grooves

Velvet Vibe



American Walnut varnished satin



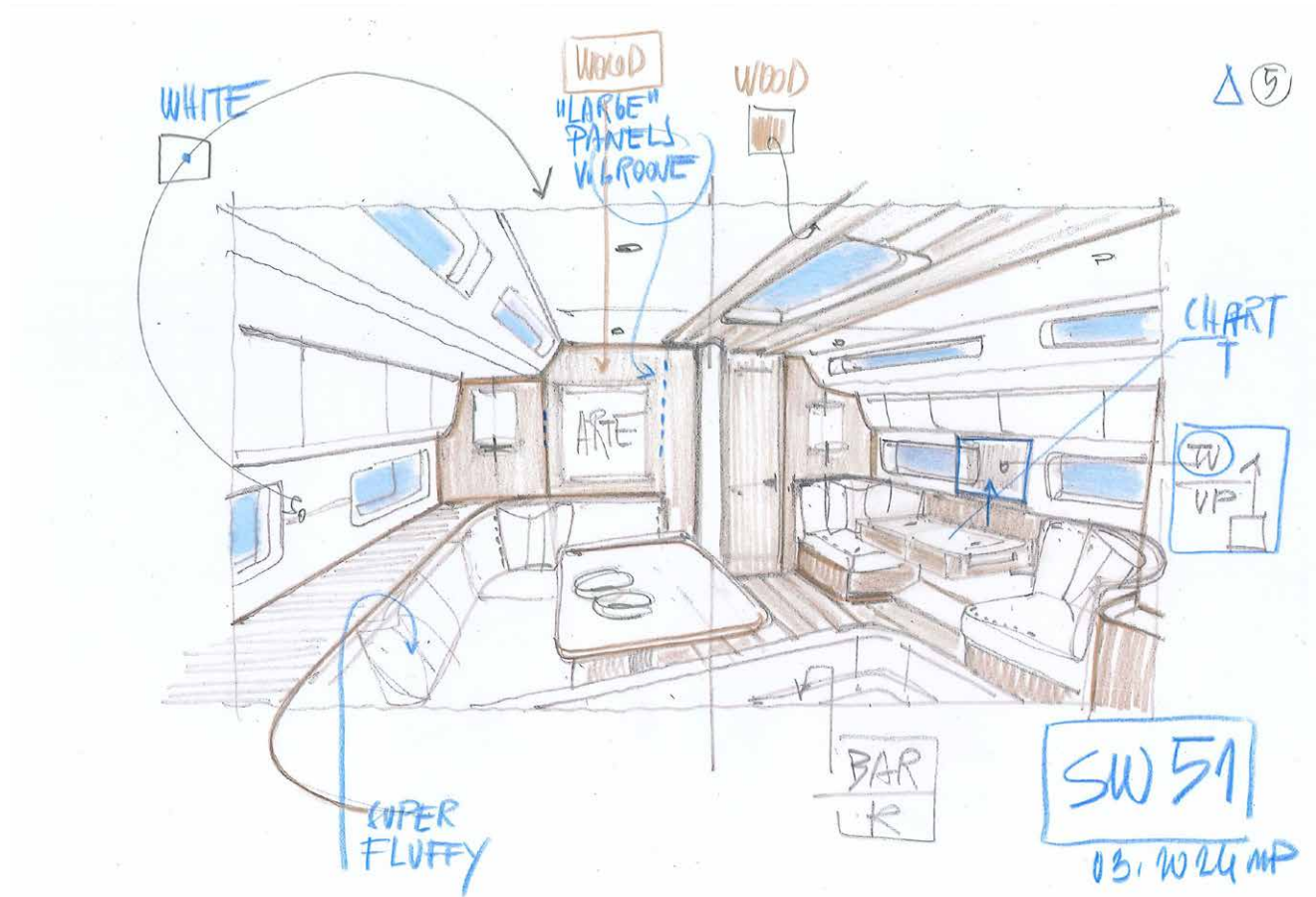
American Walnut varnished glossy finish



American Walnut varnished satin with light stripes

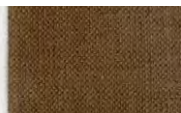


Décape Oak white treatment varnished



# All moods. Fabrics and leather

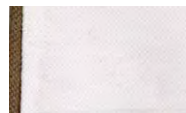
Swan Soul suggested



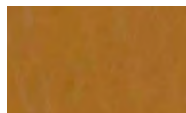
Caleido Taupe 11309



Optional throwpillows Caleido Taupe 11309



Caleido White 10995



Cognac Leather SILK 0250



Optional Nougat Brown Leather SYDNEY 5529

Scandi Vision suggested



Caleido Sky Blue 3582



Linosa 11032



Caleido White 10995

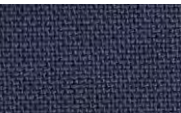


Optional throwpillows casual gold 27



Optional Whiskey Leather SILK 0551

Blue Genoa suggested



Mariaflora Diva 100



Mariaflora Alassio 2



Mariaflora Casablanca 75



Optional Cognac Leather Silk 0250



Optional Sea Blue Leather Sydney 6644

Velvet Vibe suggested



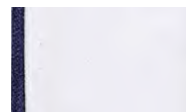
Caleido Jeans 3585



Optional throwpillows Caleido Jeans 3585



Caleido Light Jeans 11411



Caleido White 10995



Caleido Chili Red 2598



Caleido Red Velvet 3026



Caleido White 10995



Optional Nature Leather SYDNEY 3394



Optional Sea Blue Leather SILK 0779

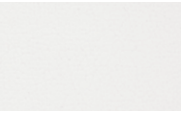


Optional Oxblood Leather

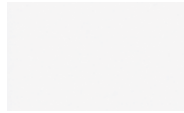


Optional Chestnut Leather SILK 0229

All moods



Caleido White 10995



Corian Glacier White













# Specification

## General

Length of hull	15.55 m	51.02 ft
LOA	16.90 m	55.45 ft
LWL	14.67 m	48.13 ft
Beam max	4.85 m	15.91 ft
Draft (std)	2.45 m	8.04 ft
Shallow draft	2.05 m	6.72 ft
Displacement (light)	18.000 kg	39.700 lbs
Ballast, standard keel	6300 kg	13.900 lbs
Engine Yanmar 4JH80	58.8kW	80 Hp

## Rig and sail dimensions

IG	20.70 m	67.91 ft
J	6.10 m	20.01 ft
P	19.90 m	65.29 ft
E	6.70 m	21.98 ft
TSP	TBD	
Main sail	80.00 m²	861 sq.ft
Jib	67.10 m²	722 sq.ft

## Tank capacity

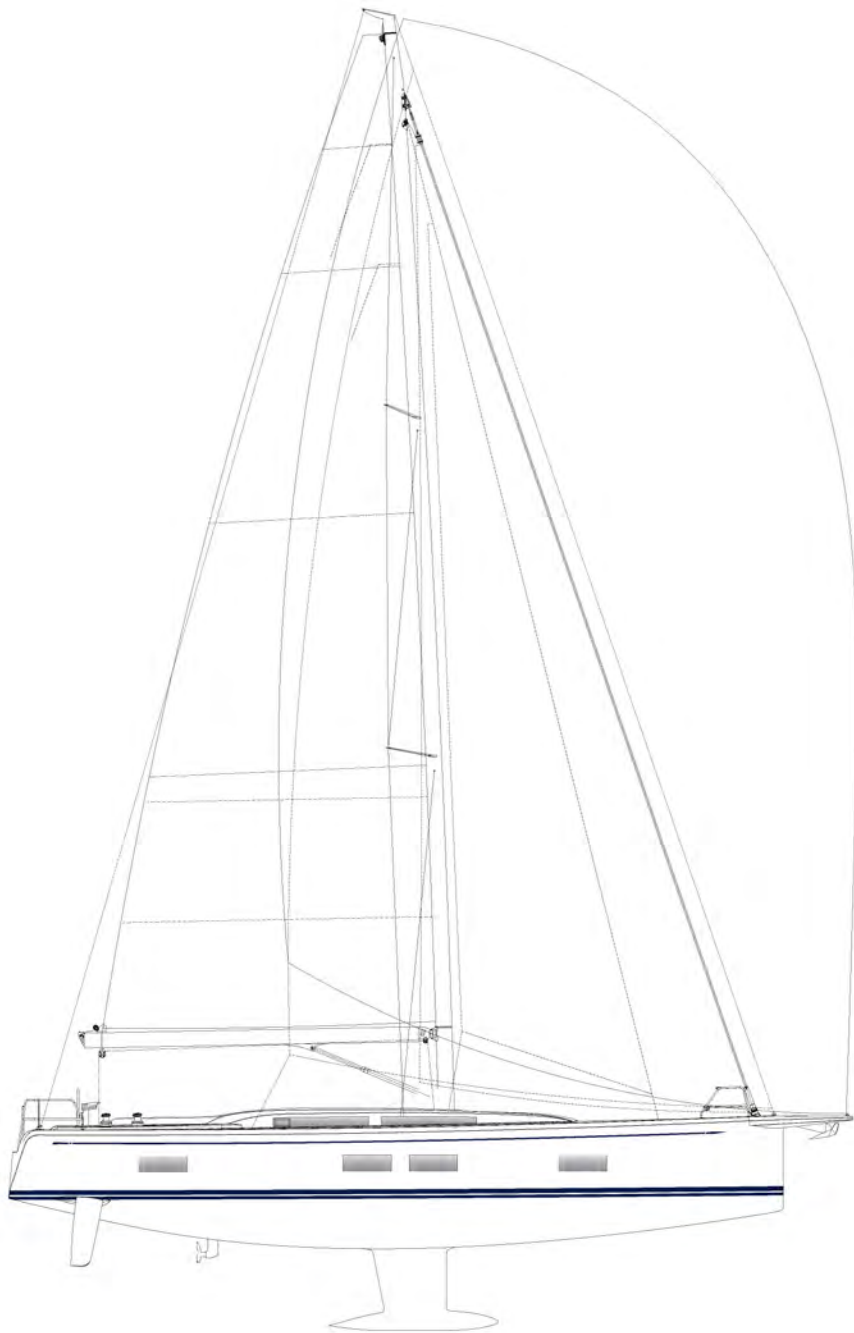
Fuel	650 l	172 USg
Water	500 l	132 USg

## Construction Approval

CE-approval: Category A Ocean

## Naval Architect

Germán Frers





This catalogue contains non-contractual descriptive information about Nautor Swan yachts including drawings, photographs as well as other data. All such information is subject to change at any time without prior notice and does not represent an exact description of any particular yacht. Photos or diagrams could include special equipment that is not part of the equipment supplied by the boatyard. All the information, figures, photographs and data provided in this catalogue are exclusive copyright, industrial property right and property of Nautor Swan.

09/25

