

YD
YACHT DESIGN
yacht.design

w i n t e r
2 0 2 2

YD

YACHT DESIGN

A WAVE
AHEAD

THE
BOAT
SHOW

dicembre 2022 anno 1_ N°1
€ 20 / US\$ 20 / £ 20



PORTFOLIO

SWAN 128



SWANN



128

At the Nautor shipyards in Pietarsari, Finland, work has already started on the Germán Frers' project to create the new Swan 128, expected to be launched in 2025. The Micheletti + Partners studio has taken care of the deck and deckhouse shapes while interior design has been entrusted to architect Misa Poggi as per shipyard tradition. Such inception synthesizes elegance and performance. This is Nautor's philosophy, applied to all its

SWAN 128

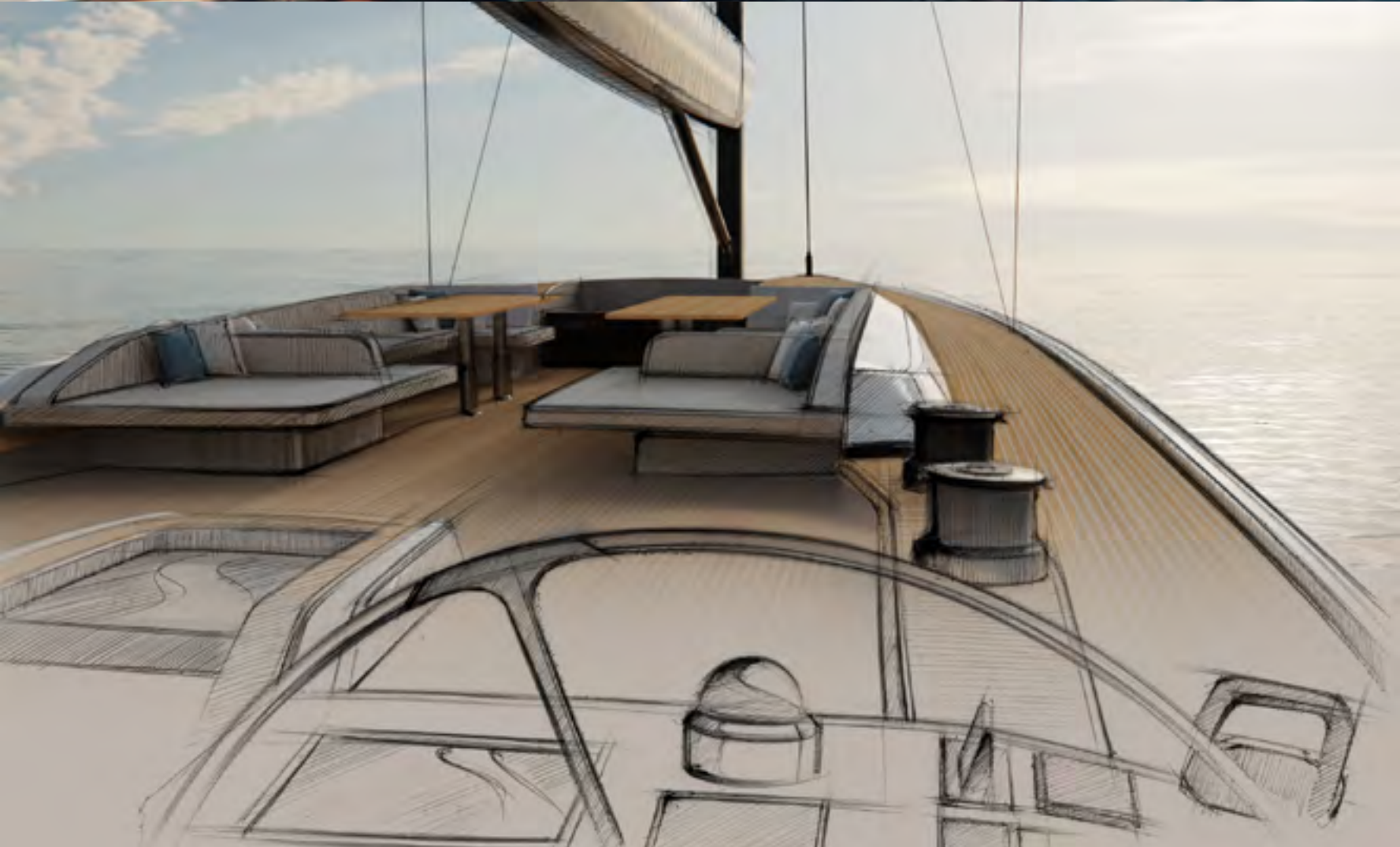


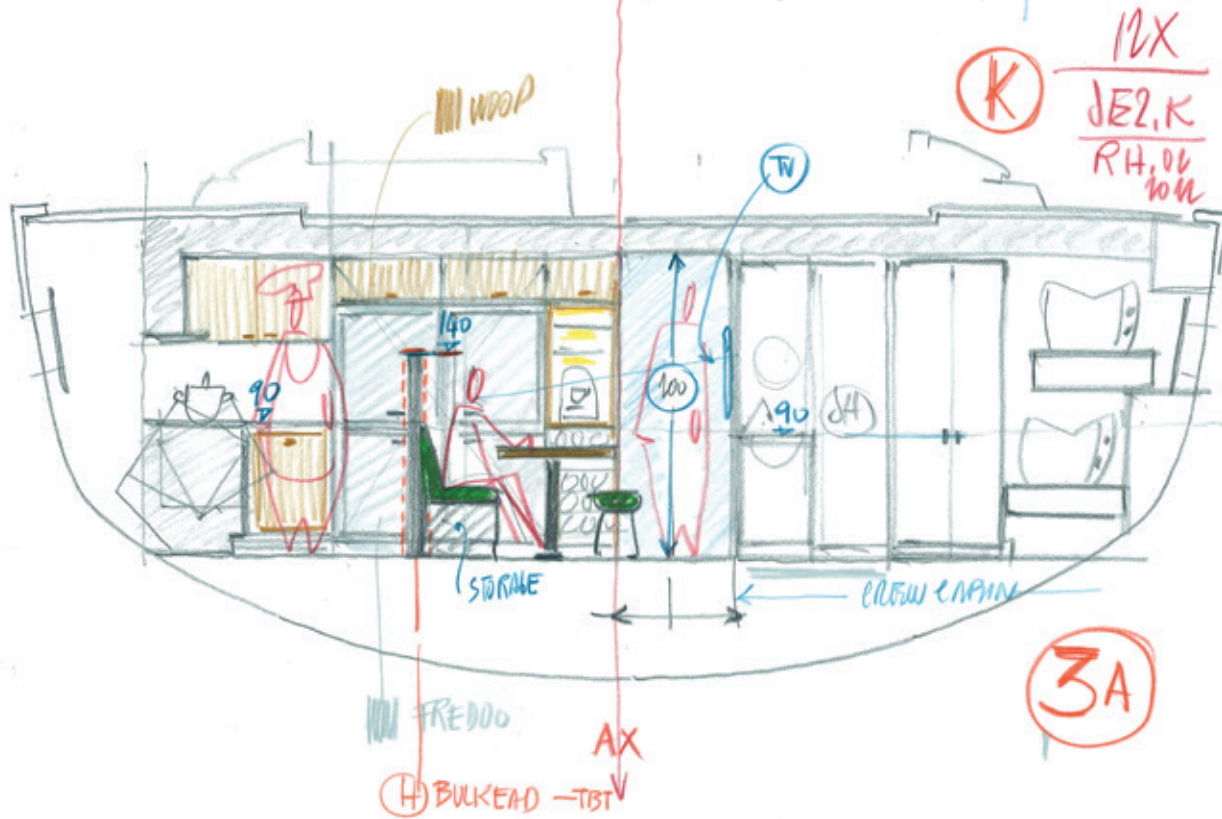
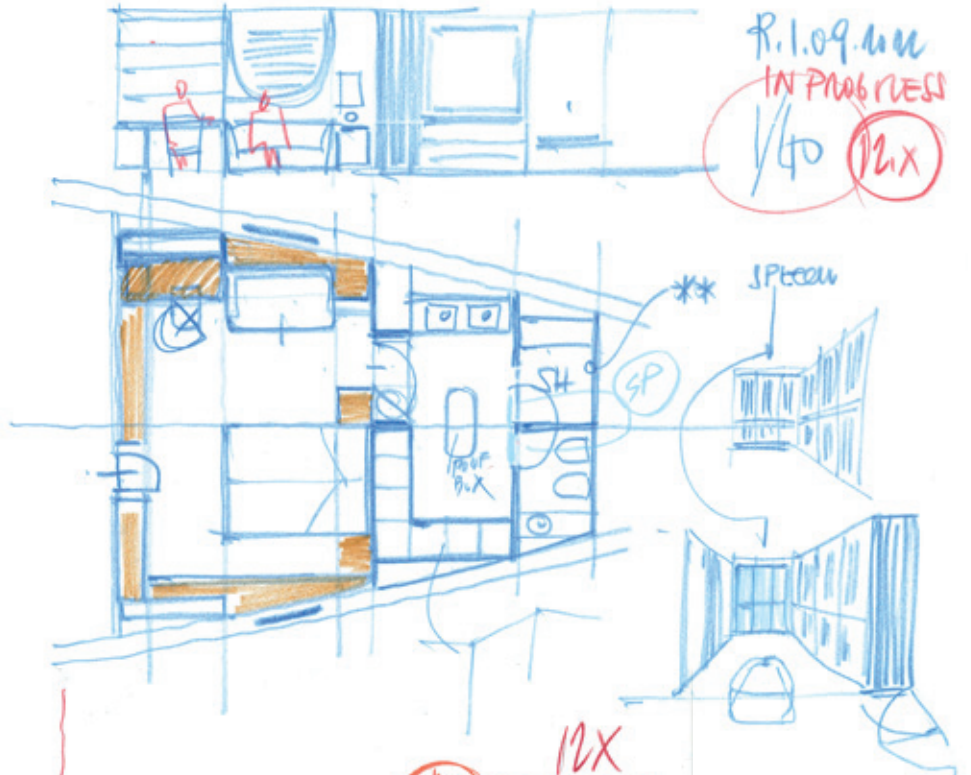
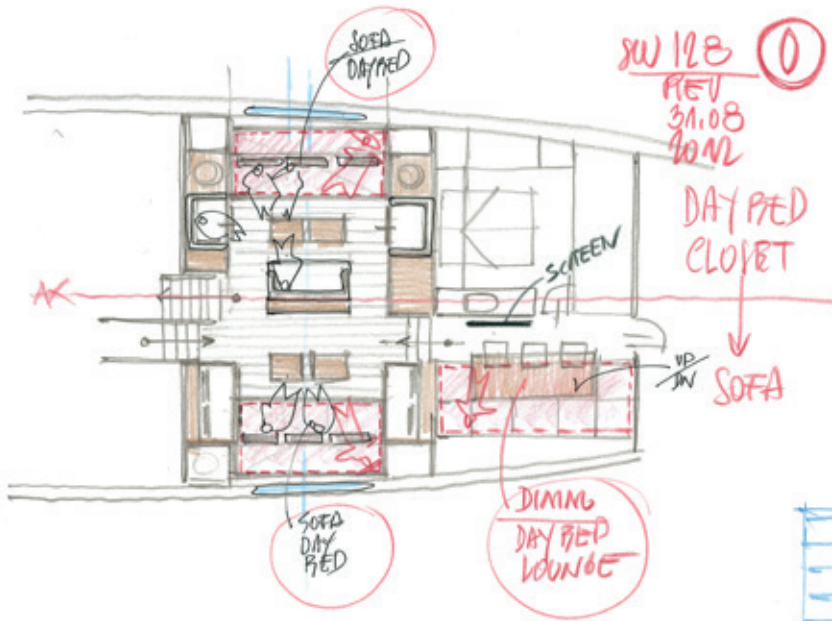
creatures. For this 39-meter maxi, the shipyard has commissioned Cape Horn Engineering a study on fluid dynamics to optimize canoe-body shapes in all dynamic sailing conditions.

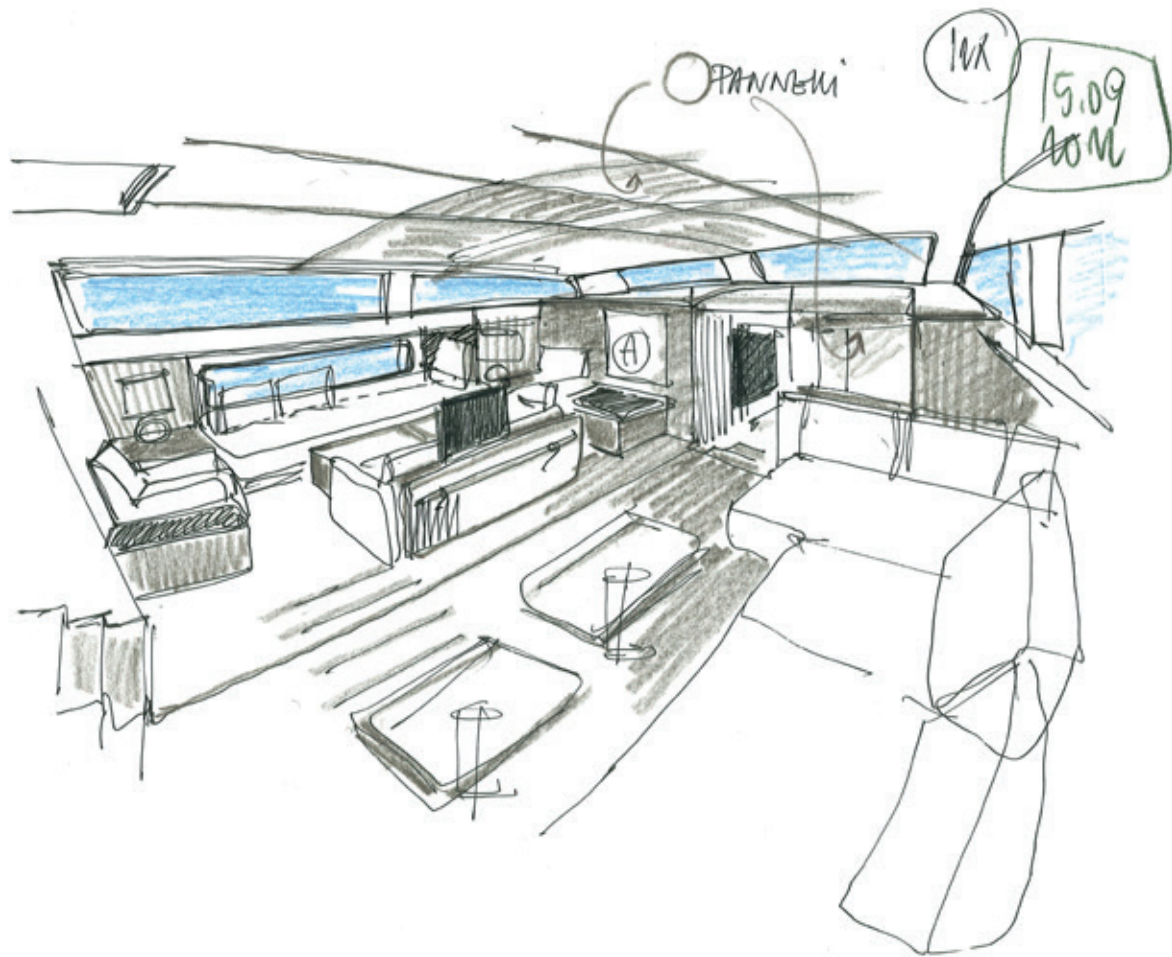
The Swan 128 is, in fact, a sporty cruiser designed for long voyages but also at ease in regattas. The full carbon hull uses laminated sandwich with carbon fiber fabrics pre-impregnated in epoxy resin. She has been designed to perform at all speeds, while the double rudder blade guarantees greater control and limits luffing. A sail plan of 816 square meters, completed by an asymmetrical kite of 1,180 square meters, guarantees speed and

performance even with light winds: the boat can reach 17 knots.

As per Nautor tradition, much attention has been paid to comfort in navigation. Heeling was limited to around 20°: you do not need to be an acrobat to move on board. Below deck, the flexible layout designed by Misa Poggi provides a full-beam owner's suite in the bow area, while the guest cabins can take on different configurations. However, comfort rules by all means. The TV lounge can be converted into a dining room with seating for up to ten guests. The aft area, with three double cabins, is dedicated to the crew.







Oak base woods,
leathers and textiles can
interpret any owner's
desire and make each
Swan 128 unique.
The flexible interiors
layout comes out from
the collaboration among
Frers Naval Architecture
& Engineering, the
shipyard's interiors
department and
architect Misa Poggi.