



SWAN 60 FD



The Swan 60 FD was conceived to meet a growing demand for a model engineered for performance, comfort and style. This performance orientated Swan boasts high stability, direct steering system, foils, carbon fibre spar package, and easy handling results in a light, responsive yacht.

The cockpit is spacious and offers the choice of a clean open transom version or functional closed transom version, which features a sunbathing area and dinghy garage. The result of extensive research and use of advanced materials is a low drag hull and appendage package, with a long dynamic waterline at displacement and semi planing speeds.

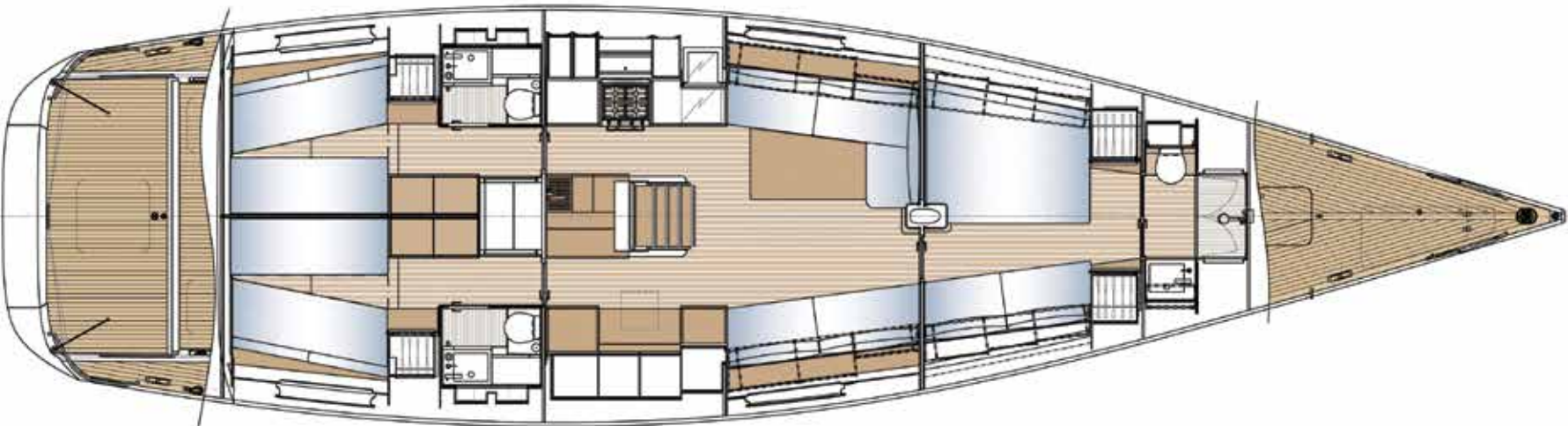
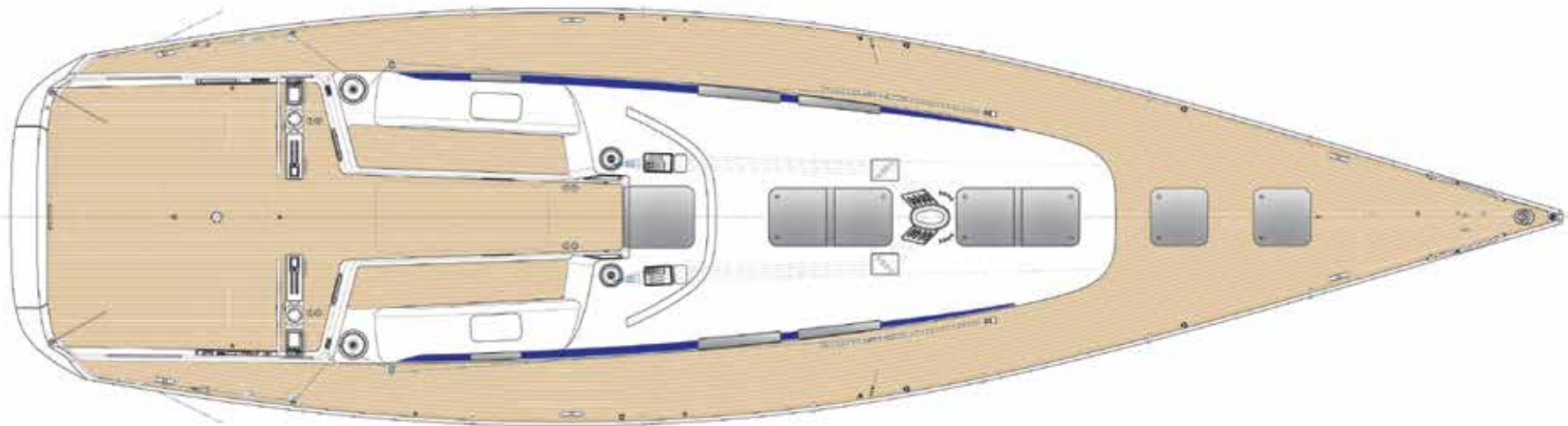
The Swan 60 FD has a T shaped blade keel and lead bulb and comes with two draft

options (3.6 m and 2.9 m), both using the same structure and offering enhanced stability.

Designed to maximize living space and offer plenty of natural light, the interior is of symmetrical linear layout and both attractive and practical, with options for the location of the owner's cabin.

The large saloon combined with a spacious navigation station forms the base of the interior with a generously sized owner's cabin forward and two symmetrical guest cabins with en-suite facilities aft.





SWAN 60 FD

General

Length overall	18.86 m	61.89 ft
Length of waterline	16.70 m	54.80 ft
Beam max	5.09 m	16.70 ft
Draught (light)	3.60 m	11.81 ft
Ballast	7,700 kg	7,000 lbs
Displacement (light)	18,700 kg	1,200 lbs

Rig and Sail Dimensions

I	25.46 m	83.53 ft
J	7.07 m	23.19 ft
P	24.32 m	79.79 ft
E	8.55 m	27.88 ft

Sail Areas

Fore triangle	90.10 m ²	970 sq.ft
Main Sail	125.85 m ²	1355 sq.ft
Jib	95 m ²	1023 sq.ft
Asymmetrical Spinnaker	320 m ²	3444 sq.ft

Technical Specifications

Fuel	500 l	132 gal
Water	400 l	105 gal
Hot water	50 l	13 gal
DC Power	120 l	32 gal
AC Power	480 Ah	24 V
Shore Power	230 V 50 Hz	9.4 kVA
Air conditioning	230 V 50 A	11.5 kVA
Engine – Volvo	81 kW	110 hp

Classification

CE Category: A Ocean

